



**PROSPERITY  
BEGINS HERE...**



**ADORABLE VILLA PLOTS @ PALLIKARANAI**

**Near Kamatchi Hospital**

**REGULARISATION APPROVAL No.: 03303/2019**

**SUB DIVISION APPROVAL No.: SD/WDCN14/00507/2019**

**RERA APPROVAL No.:**

**READY TO BUILD  
CMDA APPROVED  
PLOTS**

**ALREADY  
ESTABLISHED  
NEIGHBOURHOOD**

**CLOSE  
PROXIMITY  
TO OMR GST &  
VELACHERY**

**RENTAL  
POTENTIAL  
IS GOOD**

# YOUR GATEWAY TO PROSPERITY



Strategically positioned at Pallikaranai neighbouring all urban essentials, Urbando Daksha welcomes you to be the proud owner of a plot situated well within city limits. The project is well equipped with a serene setup, well laid internal roads & street lighting.

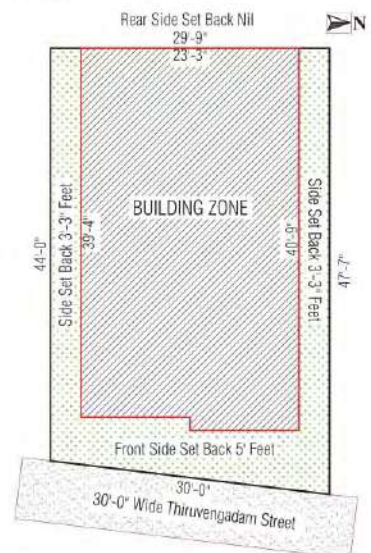
In a location where minimal size plots are a rarity, Urbando Daksha allows you to make a prosperous start by investing in plots ranging just from 1200 sq.ft - 1800 sq.ft to build your dream home.

## WE WILL BUILD YOUR DREAM HOME

At Urbando, we are committed to go that extra mile to fulfill all your realty dreams. Urbando Daksha is designed to do just that. Buying a plot for investment purposes or to realize a dream home is just a call away with us. With hands on experience and expertise we are all set to build a home that will match your expectations and beyond.

### DREAM HOME OPTIONS

**Plot Area: 1302 Sq.ft. | Built-up: 1519 Sq.ft.**  
Structure: Stilt + 2



\* Subject to approval from all statute authorities

# LOCATION ADVANTAGE

Owning a Plot Closer to Velachery and Madipakkam will fetch good rental returns and good appreciation.



Connectivity to  
**Pallavaram -  
GST Road**  
8 kms via  
Radial Road



**Airport**  
12 kms



Close to Velachery  
**MRTS Station**  
3 kms

●  
**Adithya  
Vidya Mandir**  
500 mts



●  
**Velammal  
School**  
Madipakkam  
850 mts

●  
**Sunshine School**  
Madipakkam &  
Velachery  
4.2 km



**Medavakkam**  
3 kms

●  
**Balaji  
Dental  
College**  
1.2 kms



●  
**Jerusalem  
Engineering College**  
1.1 kms

●  
**Techzone  
Upcoming  
IT Park**  
2 kms

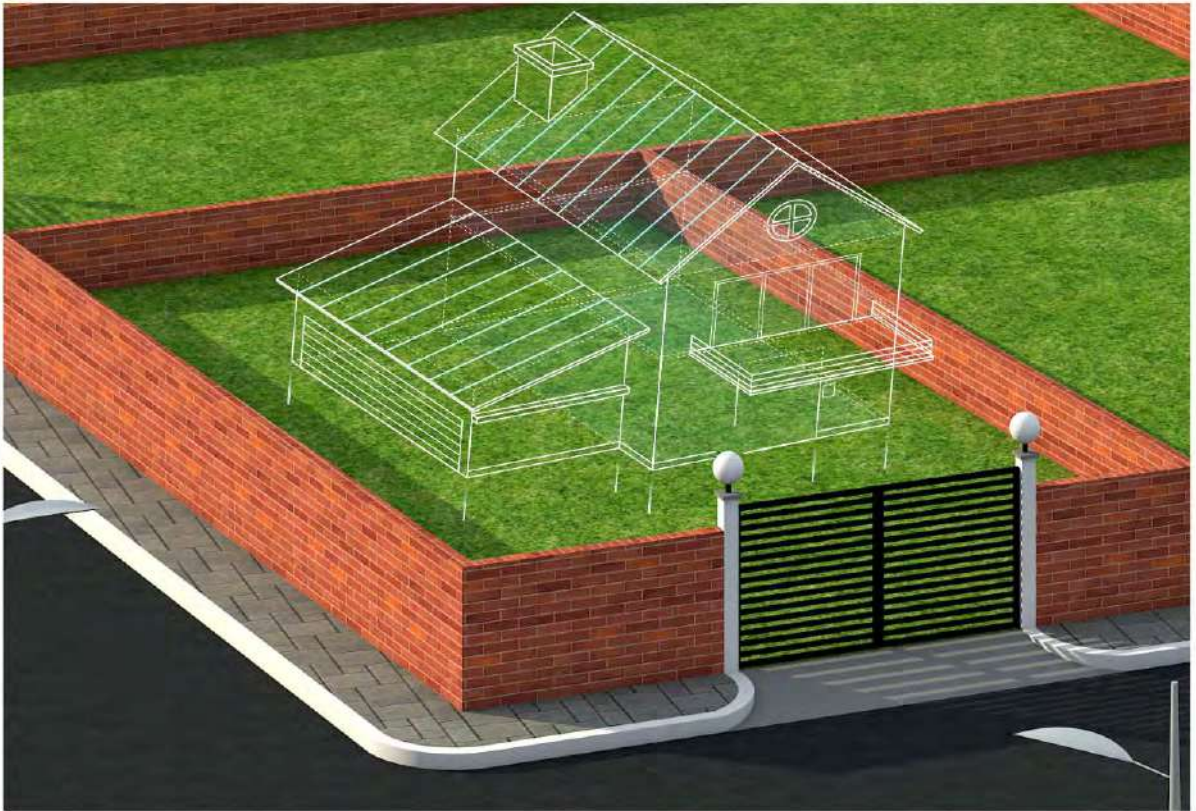


●  
**Kamatchi  
Hospital**  
1.1 kms





# THE URBANDO DAKSHA ADVANTAGE



- Urbando Daksha has 8 plots ranging from 1244 Sq.ft to 1860 sq.ft
- Just about 750 mts from the Radial Road and closer to Kamatchi Hospital & Lanson Toyota on Radial Road.
- Pocket - friendly for a "First time Home Buyer" looking to build his own house between OMR & GST

## FEATURES

- All are approved Plots
- Compound wall of 6 feet height & internal partition between each plot will be 3 feet high
- Complete Land will be filled with good soil up to 4 feet from the current road level
- Each Plot will have direct public road with an exclusive entrance gate
- Ground water level is at less than 40 feet

## IT's Happening !

**Chennai One IT Park**, a largest IT Park with about 2 million sq.ft of built up space and over 20000 employees currently working is within 3.5 kms. A massive IT - Office Space development of 1.8 mn sq.ft within 1 km distance by **Raheja Group** is expected to get over in next 5 years with 18000 people working. **Embassy**, group from Bangalore, is building another 2 mn sq.ft of IT Space on the radial road within 6 kms with about 20000 people expected to work.



**PLOT DETAILS**

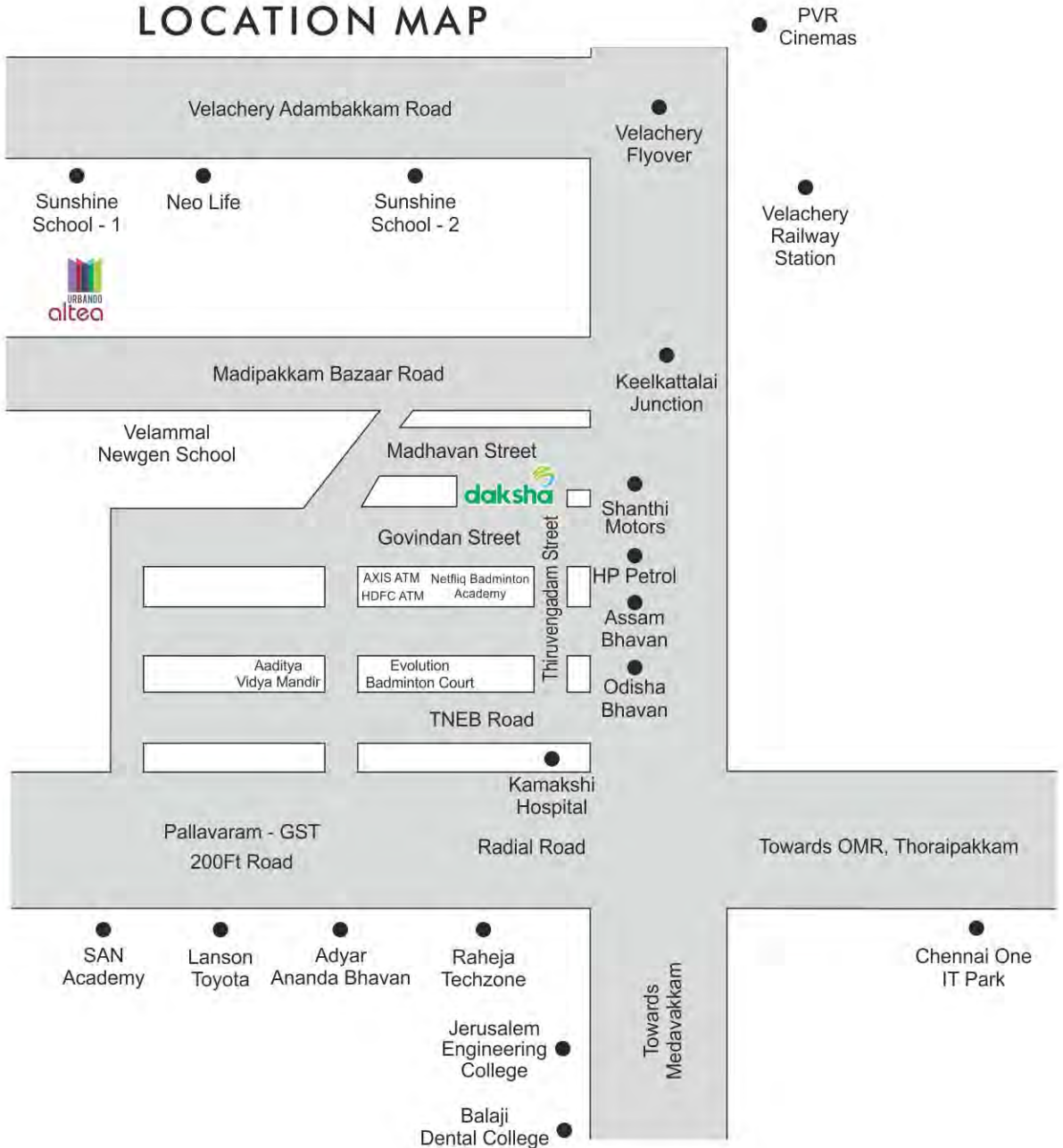
PLOT NO.	SQ.FT
A	1244.00
B	1302.00
C	1359.00

PLOT NO.	SQ.FT
D	1451.00
E	1811.00
F	1804.00

PLOT NO.	SQ.FT
G	1860.00
H	1860.00



# LOCATION MAP



**Site Address:** Plot No. 153 - 158, Sri Balaji Nagar,  
Pallikaranai, Chennai 600 100.

## URBANDO HOUSING LLP

Corporate Office: T1, 3rd Floor, Chona Centre,  
45, College Road, Nungambakkam, Chennai 600 006.  
**E** info@urbando.in | **W** www.urbando.in

Disclaimer: This brochure is conceptual and not a legal offering. All the images / furniture shown are for illustrative purpose only.

## BANK LOANS ARRANGED



FOR MORE DETAILS, CALL

**+91 78457 86806 | 95661 27225**